



# Annette Dahl

*I love it, when the most  
inconspicuous scene, can leave  
you filled with wonder.*



Love, peace and happiness for all life on earth is what I envision in my perfect world, but who doesn't? Peace I find, when I am exploring places in nature with my camera. In search of new motifs I forget the time, feel neither hungry nor cold and immerse myself completely in the moment. It's a source of inspiration for me and a place to unwind. Finding the beautiful and extra-ordinary in the ordinary drives me and gives me great joy.

My photographic journey has taken me from traveling abroad to iconic places back to places closer to my home. I realized that while I like a wonderful classic landscape photograph, the quieter, intimate scenes speak to me more, evoke a lot more emotion in me. I am particularly fascinated by trees and forests, which you will certainly see in my work.

In the last ten years I have learned to appreciate my local woodlands in northern Switzerland. I am happy to live in an area where fog and mist are common, especially in spring and autumn. And that's my favorite combination, trees in the fog.

When I'm lucky enough to capture a special scene that speaks to my soul, I never tire of looking at it. Whether the images evoke a feeling of joy or convey a rather contemplative mood, they all mean a lot to me.

So my wish is, whenever you look at my images, you will also see the wonder, immerse in the tranquility and feel at ease and peace.

# ABOUT THE COLLECTION



## Woodland

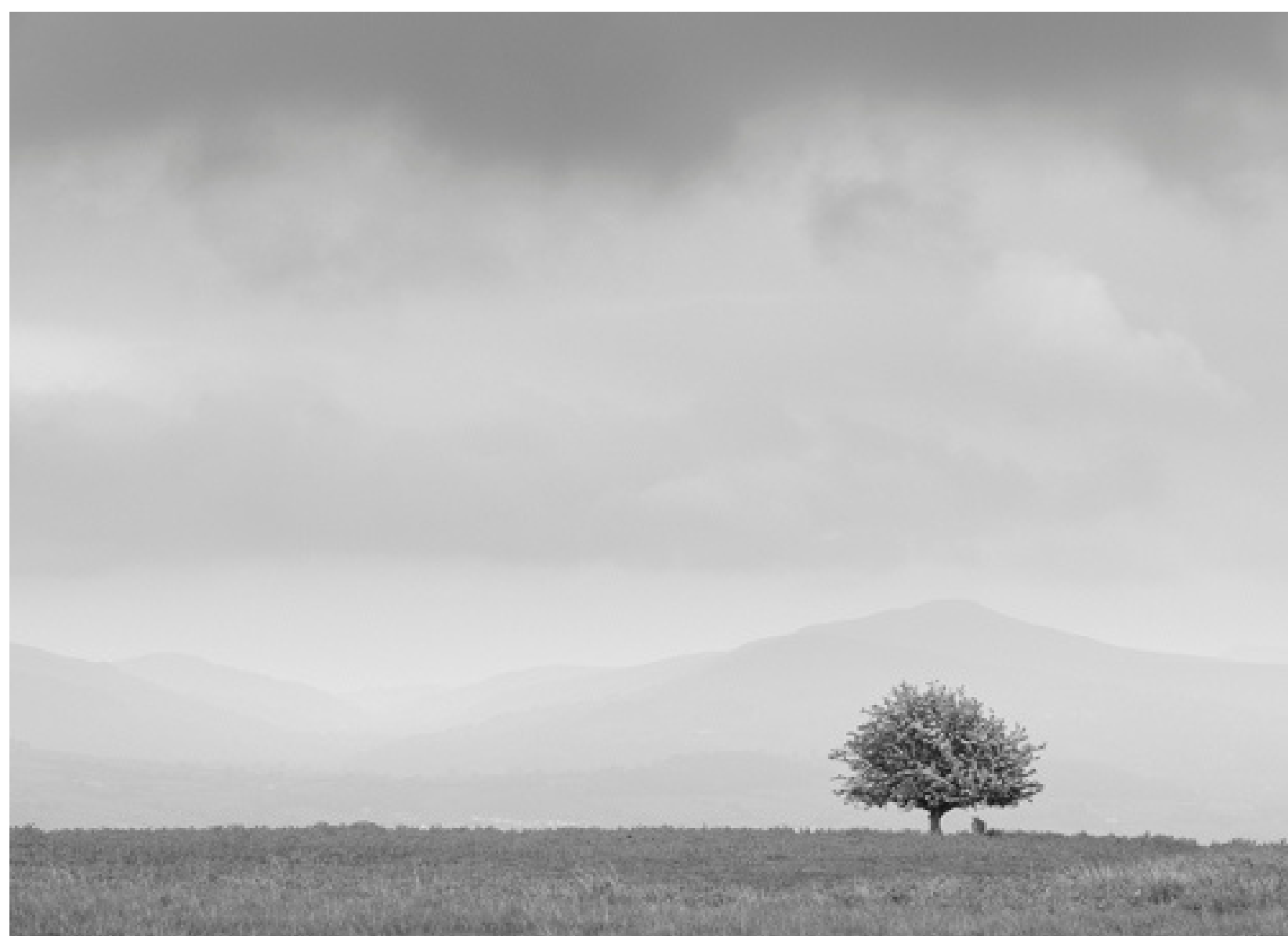
During my photography explorations in the woods, I keep my eyes and mind open to the special scenes that catch my attention. Often these scenes remind me of characters interacting with each other and the image titles come easily.

Harmony and symmetry is something I really like in a composition. For this collection, I chose mainly lighter, quieter images with muted tones and a mystical, calming atmosphere.

## Minimalist

Minimalist compositions I discovered in the more recent years. The often tiny subjects, mainly trees, in the vastness of space, remind me of fantasy lands you hear from in fairy tales. The challenge and also the fun, is to find potential scenes in the distance and isolate it from the surroundings.

These more simple kind of images stand in stark contrast to the rather chaotic scenes you find in forests and give me a childlike joy.



## Black and White

In my black and white works, I don't pursue a specific theme. Instead, I let myself be inspired by the scene. The potential for converting to black and white for some scenes is clear for me before I even take the photo, for others only later in the selection phase, especially when color tends to distract from the core of the image. The impact of an abstract image in black and white should never be underestimated.



## ABOUT THE EDITION

### LIMITED EDITIONS CERTIFICATE OF AUTHENTICITY

The entire print series has limited edition quantity in each size. Once the prints sell out, in each size and edition, they will never be available again.

Each image comes with a certificate of authenticity. It is signed, provides the name of the image, the edition number, production date, certificate number, as well as a numbered hologram, which will also be attached to the back of the print.

## ABOUT THE FINE ART

### THE QUALITY & THE SUSTAINABILITY PROMISE

- Sustainably sourced and produced paper
- The photographs are printed on **Hahnemühle Fine Art Bamboo Paper**
- 100% satisfaction guaranteed. If you are not satisfied, I will happily replace your print order.





# SIZING GUIDE

Most of the images are available in all four sizes **S, M, L & XL**. Where possible, the prints have been sized specifically to fit with readily available framing sizes, so a frame can be purchased directly from a local supplier. Custom framing is highly recommended for Large and Extra Large.

## Prints (unframed)

Ratio	Size	Border size	Border size	image short edge	image long edge	paper size short edge	paper size long edge	image short edge	image long edge	paper size short edge	paper size long edge	Limited edition of
		cm	inch	cm	cm	cm	cm	inch	inch	inch	inch	
2:3	Small	0.5	0.20	20.0	30.0	21.0	31.0	7.9	11.8	8.3	12.2	50
2:3	Medium	1	0.39	40.0	60.0	42.0	62.0	15.7	23.6	16.5	24.4	25
2:3	Large	1	0.39	60.0	90.0	62.0	92.0	23.6	35.4	24.4	36.2	10
2:3	Extra Large	1	0.39	80.0	120.0	82.0	122.0	31.5	47.2	32.3	48.0	5
5:7	Small	0.5	0.20	20.0	28.0	21.0	29.0	7.9	11.0	8.3	11.4	50
5:7	Medium	1	0.39	40.0	56.0	42.0	58.0	15.7	22.0	16.5	22.8	25
5:7	Large	1	0.39	60.0	84.0	62.0	86.0	23.6	33.1	24.4	33.9	10
5:7	Extra Large	1	0.39	80.0	112.0	82.0	114.0	31.5	44.1	32.3	44.9	5
4:5	Small	0.5	0.20	20.0	25.0	21.0	26.0	7.9	9.8	8.3	10.2	50
4:5	Medium	1	0.39	40.0	50.0	42.0	52.0	15.7	19.7	16.5	20.5	25
4:5	Large	1	0.39	60.0	75.0	62.0	77.0	23.6	29.5	24.4	30.3	10
4:5	Extra Large	1	0.39	80.0	100.0	82.0	102.0	31.5	39.4	32.3	40.2	5
1:1	Small	0.5	0.20	20.0	20.0	21.0	21.0	7.9	7.9	8.3	8.3	50
1:1	Medium	1	0.39	40.0	40.0	42.0	42.0	15.7	15.7	16.5	16.5	25
1:1	Large	1	0.39	60.0	60.0	62.0	62.0	23.6	23.6	24.4	24.4	10
1:1	Extra Large	1	0.39	80.0	80.0	82.0	82.0	31.5	31.5	32.3	32.3	5

When framing prints, you might want to choose a larger frame **with mat option** and with a mat opening that corresponds with the image size.

If **no mat** is used for framing, it is important for the paper to not touch the glass, or your fine art print will be ruined by condensation. Ask your framer to use a box frame and/or spacers to make sure there's enough separation between glass and art print.

For recommendations on framing and/or requests for framed prints please contact me on [fineartprints@annettedahl.com](mailto:fineartprints@annettedahl.com)

# SIZING GUIDE

## SMALL EDITIONS OF 50

Perfect for your computer desk, office space, countertop or even your bathroom, or in a collection of 2 or 3 images in a hallway.



## MEDIUM EDITIONS OF 25

A great size to put in a collection of 2 or 3 images in a hallway, living room, bedroom to have a cohesive space.



# SIZING GUIDE

## LARGE EDITIONS OF 10

Large options are best paired together in themes of subject or tonality. Best for Bedrooms, office spaces, above the fire place or dining room.



## EXTRA LARGE EDITIONS OF 5

These are massive prints and combined with a custom frame, these will be sure to make a statement in any home or office. Best for large open spaces with large negative space on a wall.



# WOODLAND

ASPECT RATIO 3:2



Shall We Dance



# WOODLAND

ASPECT RATIO 3:2



Last Beech Leaves



Naked Tree



In the Fog

# WOODLAND

ASPECT RATIO 3:2



Zauberwald



Zauberwald III



Zauberwald IV

# WOODLAND

ASPECT RATIO 5:7



Waldfee



Waldgeist

# WOODLAND

ASPECT RATIO 4:5



"V"



Head of the Family

# WOODLAND

ASPECT RATIO 1:1



The Crown



Hope

# MINIMALIST

ASPECT RATIO 3:2



Solitary



Colors of Scotland

# MINIMALIST

ASPECT RATIO 2:3



Lonely Tree in the Mist

# MINIMALIST

ASPECT RATIO 7:5



Land of the Dwarves



After the Storm



# MINIMALIST

ASPECT RATIO 7:5



Still alive

# MINIMALIST

ASPECT RATIO 5:7



The Hut *(max. size Medium)*

# MINIMALIST

## ASPECT RATIO 1:1



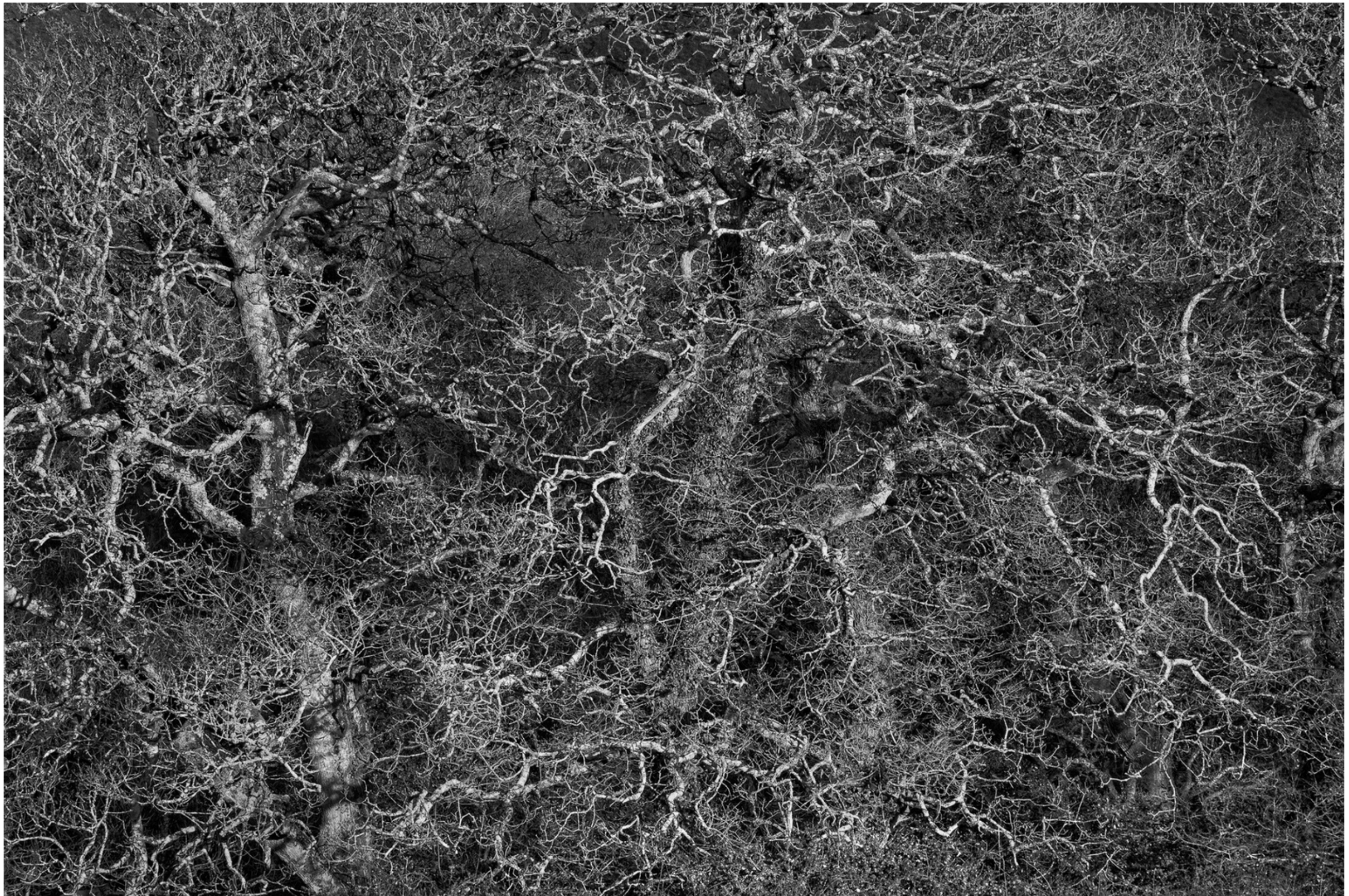
Bow



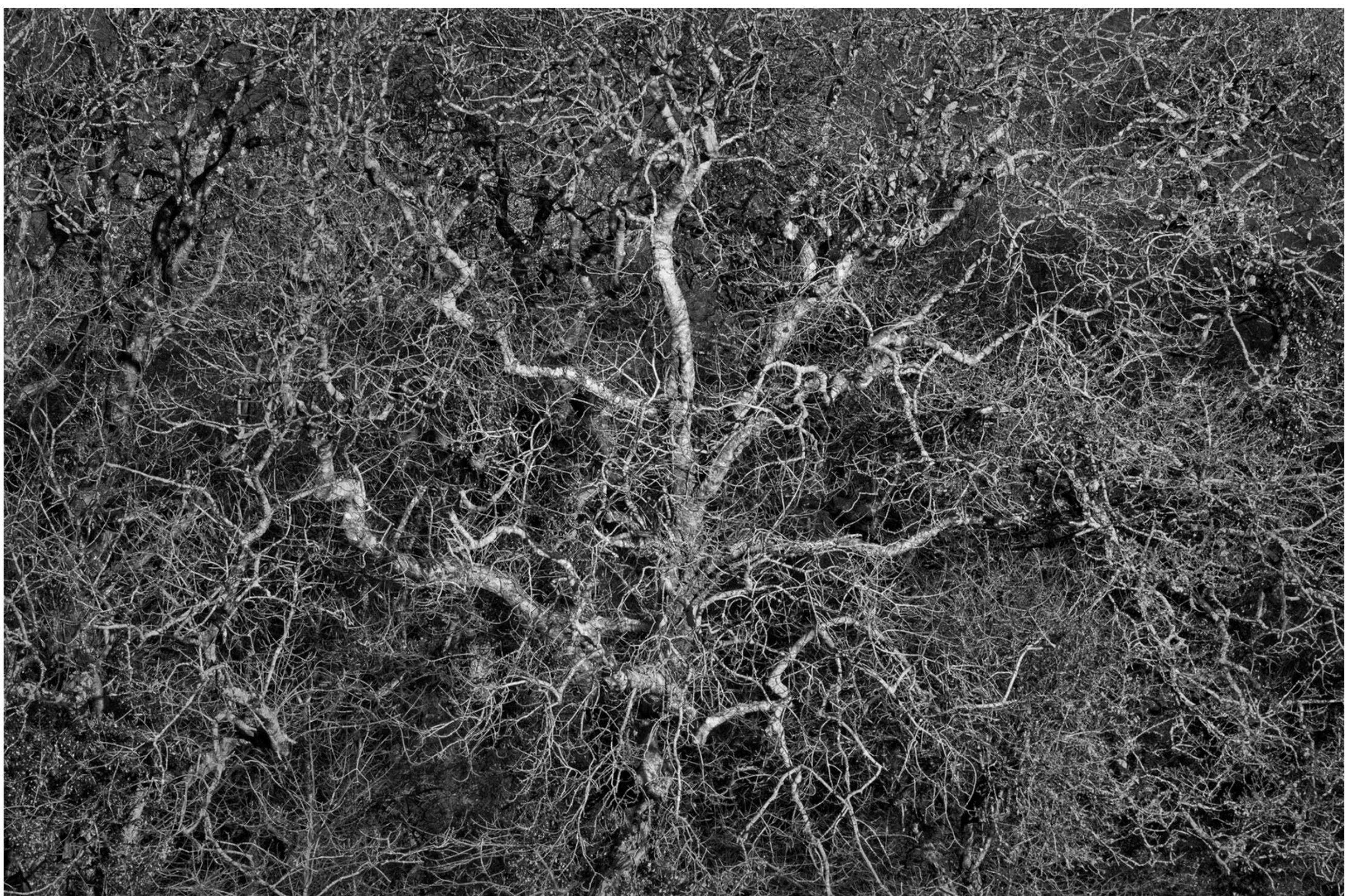
Three Cormorants

# BLACK & WHITE

ASPECT RATIO 3:2



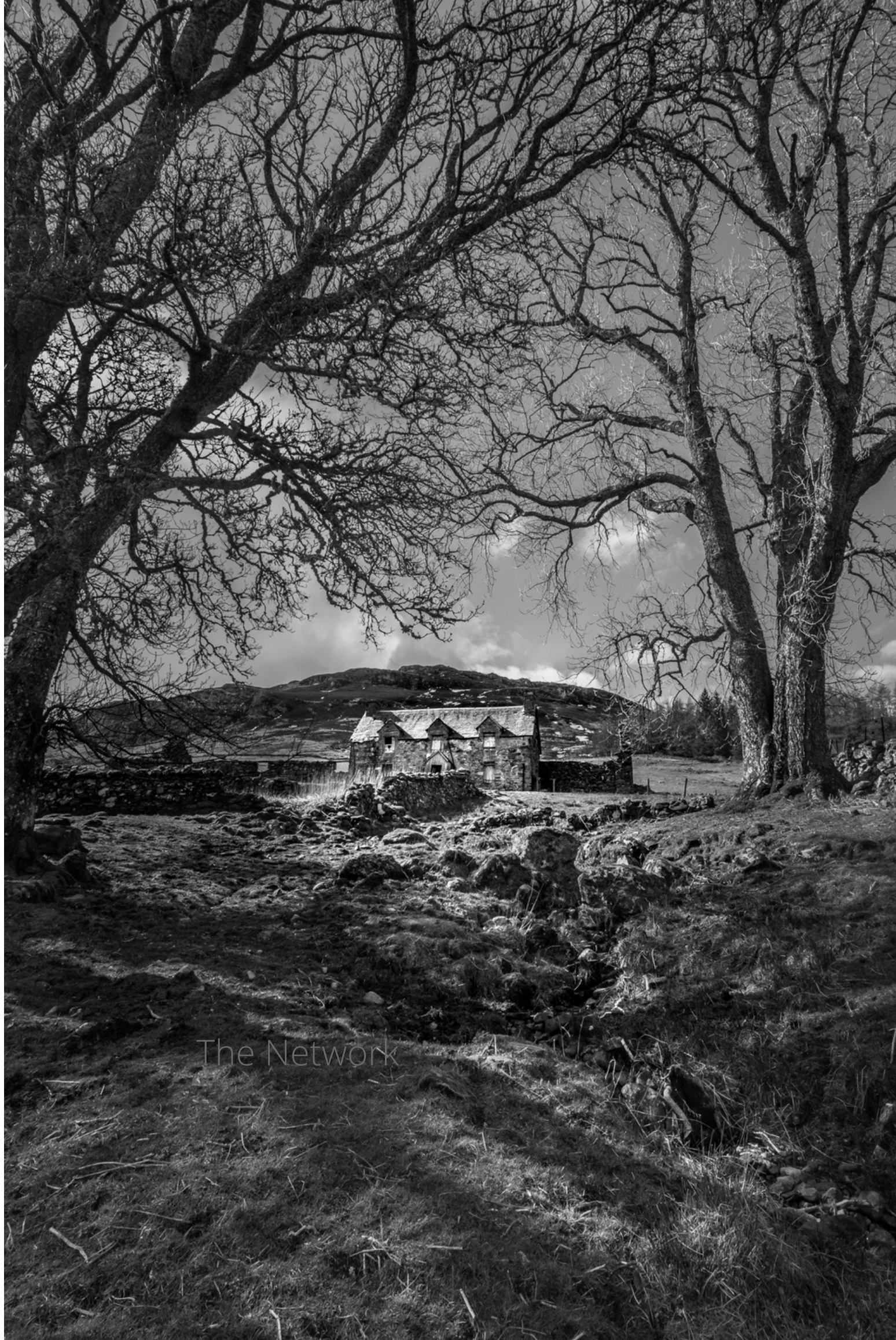
The Network



The Web

# BLACK & WHITE

ASPECT RATIO 2:3



Abandoned Farmhouse (*max. size Medium*)



Still standing

# BLACK & WHITE

ASPECT RATIO 3:2



Spring Tree (*max. size Medium*)



Ghost Trees

# BLACK & WHITE

ASPECT RATIO 3:2



*Menyanthes Trifoliata*

# BLACK & WHITE

ASPECT RATIO 7:5



The Old Sheep and the Tree

ASPECT RATIO 1:1



Smoky





# DONATIONS

With your purchase you support following organizations



As I am a big animal lover, I live a plant based life and donate to charities that fight for animal rights and animal protection. Therefore I am happy to donate 10% of all proceeds to World Animal Protection.



Another 5% of all proceeds will be donated to World Land Trust. This is an international conservation charity that protects the world's most biologically significant and threatened habitats.

Sir David Attenborough says this: "The money given to the WLT, in my estimation, has more effect on the wild world than almost anything I can think of."

# PRICES

## INTRODUCTORY PRICES

These are introductory prices, which means prices will increase as the editions sell out.

Sizes	Price CHF
Small	130.00
Medium	300.00
Large	500.00
Extra Large	740.00

**Free shipping worldwide**

If you would like to stay informed about new work or get other interesting news, subscribe to my newsletter

**[subscribepage.io/dahl\\_fineartprints](https://subscribepage.io/dahl_fineartprints)**

follow me on Instagram

 **dahl.photo**

**Thank you!**

[www.annettedahl.com](http://www.annettedahl.com)